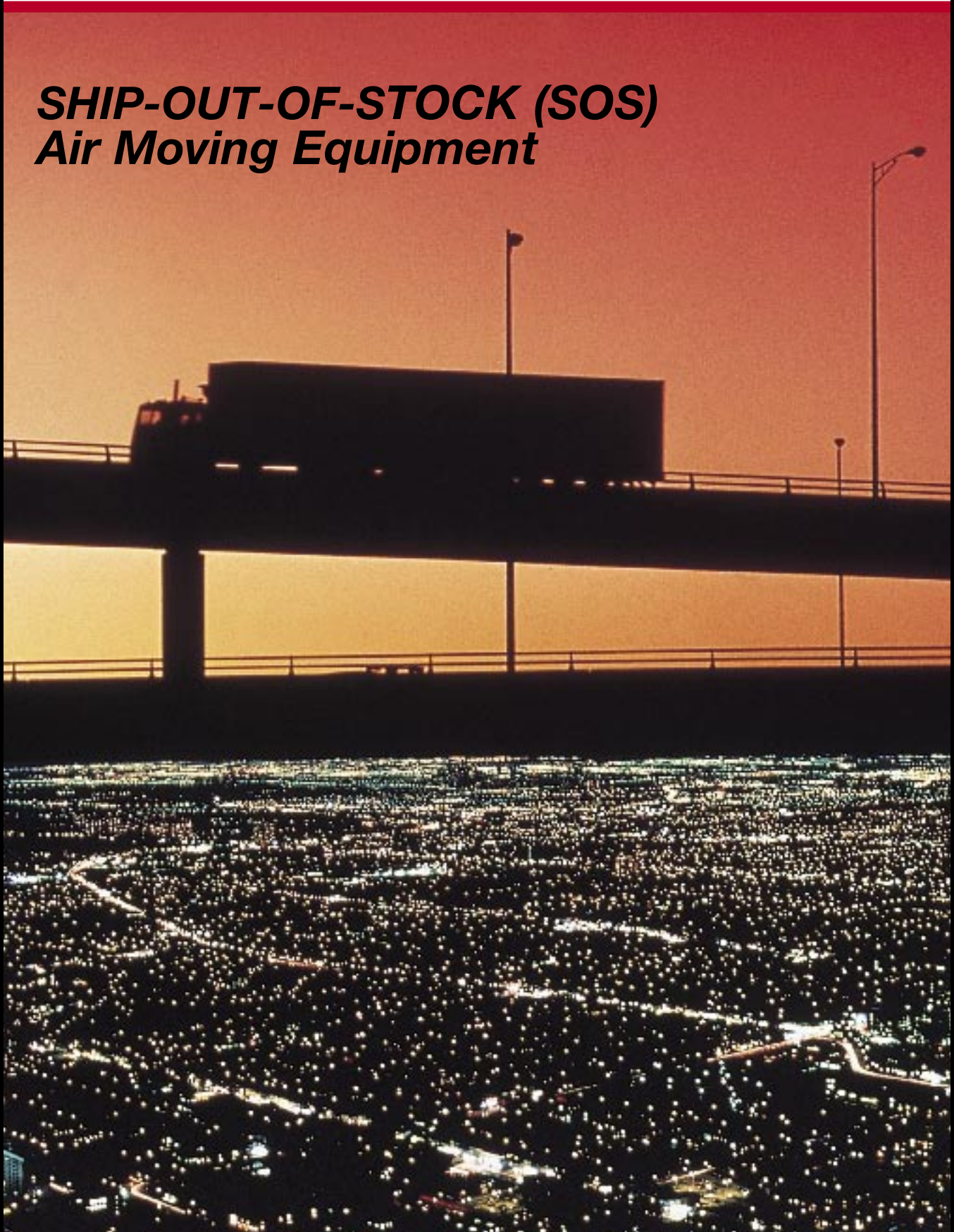


SHIP-OUT-OF-STOCK (SOS) Air Moving Equipment



Ship-Out-of-Stock (S.O.S.) Program

When you need a quality fan in a hurry, you can depend on Aerovent's S.O.S. Program.

Aerovent has provided high quality air moving equipment for over 65 years and is the recognized leader in the industry. Our Ship-Out-of-Stock (S.O.S.) program allows standard fans to be shipped within 48 hours.

- The program offers **standard** fans and accessories.
- All axial flow fans have motor and drives mounted. Centrifugal fans are stocked without motors and drives but can be shipped with final drive components when ordered.
- All fans are fully crated and ready for immediate shipment without modifications.
- If any special modifications are needed, our **Ten-Day Priority Shipment Program** is available to provide built-to-order fans. Please contact your local Aerovent representative for more information concerning our expedited shipment programs.

Fans Types Available in the S.O.S. Program

Application	Fan Types	Page
General Ventilation	Utility Mancoolers – Type UM	3
	Panel Fans, Direct Drive – Type DDP	3
	Panel Fans, Belted – Type BP	3
	Roof Ventilators, Direct Drive – Type D53	4
	Roof Ventilators, Belted – Type B53	4
	Roof Ventilators, Belt Driven – Type BD40C	4
Industrial Ventilation	Backward Inclined Utility Blowers – Type BIUB	5
	Tubeaxial Fans, Belt Driven – Type TABD & TTABD	5
	Vaneaxial Fans, Belt Driven – Type VTBD	6
Chemical Process (Ventilation of Corrosive Gases, Fumes & Vapors)	Fiberglass Tubeaxial Fans, Belt Driven – Type FBD & TFBD	6
	Fiberglass Vaneaxial Fans, Belt Driven – Type VTFBD	7
	Fiberglass Roof Ventilators, Belt Driven – Type FRV	7
Electrical Accessories	NEMA 3R Disconnect Switch	7

©2005 Aerovent, Twin City Fan Companies, Ltd. All rights reserved.

Bulletin illustrations cover the general appearance of products at the time of publication and we reserve the right to make changes in design and construction at any time without notice.

Utility Mancoolers



CATALOG NUMBER				PHASE	APPROX. SHIP. WT. LBS.	CFM @ FREE AIR
PROP	FAN TYPE	RPM	HP			
24L428	UM	1160	1/2	1	242	6600
30L230	UM	1160	1	3	338	10700
36L228	UM	1160	2	3	495	19800

Includes TEFC motor 115/230/1/60 or 230/460/3/60 and inlet and outlet guards.
Performances shown do not include screen losses.

Panel Fans – Direct Drive



CATALOG NUMBER				PHASE	APPROX. SHIP. WT. (LBS.)	CFM AT STATIC PRESSURE				
PROP	FAN TYPE	RPM	HP			FREE AIR	1/8"	1/4"	3/8"	1/2"
14S728	DDP	1750	1/6	1	43	2100	1910	1690	1300	
16L432	DDP	1750	1/4	1	52	2900	2600	2220	1640	
18L430	DDP	1750	1/3	1	70	4000	3610	3150	2625	
24L428	DDP	1160	1/2	3	89	6790	6150	5370	4350	
24L420	DDP	1750	1	3	93	8020	7600	7190	6750	6240
24L432	DDP	1750	2	3	105	11400	10950	10500	10000	9500
30L422	DDP	1160	1	3	132	11050	10380	9500	8570	7370
30L432	DDP	1160	2	3	174	14700	13900	13050	12100	10900
36L420	DDP	1160	2	3	208	17500	16600	15650	14750	13750
36L426	DDP	1160	3	3	238	21200	20370	19450	18500	17450
42L427	DDP	870	3	3	315	26200	24900	23400	21700	19790
48L425	DDP	870	5	3	483	36650	34980	33300	31500	29500
48L418	DDP	1160	7½	3	483	38750	37500	36300	35000	33850

Includes TEFC motor 115/230/1/60 or 230/460/3/60.

OPTIONAL ACCESSORIES: Round Prop Side Guard, Square Motor Side Guard, Automatic Heavy-Duty Shutter and Mounting Adaptor.

Panel Fans – “L” Belted



CATALOG NUMBER				PHASE	APPROX. SHIP. WT. (LBS.)	CFM AT STATIC PRESSURE				
PROP	FAN TYPE	RPM	HP			FREE AIR	1/8"	1/4"	3/8"	1/2"
36L428	BP	944	2	3	202	18130	16900	15630	14400	12850
42L428	BP	836	3	3	296	25400	23850	22300	20600	18650
48L428	BP	669	3	3	374	30400	28100	25750	23350	20050

Includes an adjustable V-belt drive and TEFC motor 230/460/3/60.

OPTIONAL ACCESSORIES: Round Prop Side Guard, Square Motor Side Guard, Automatic Heavy-Duty Shutter and Mounting Adaptor.

General Ventilation

Model D53 Roof Ventilators – Direct Drive



CATALOG NUMBER				PHASE	APPROX. SHIP WT. (LBS.)	CFM AT STATIC PRESSURE				
PROP	FAN TYPE	RPM	HP			FREE AIR	1/8"	1/4"	3/8"	1/2"
18L430	D53	1725	1/3	1	157	3300				
24L428	D53	1160	1/2	3	202	6170	5530			
30L232	D53	1160	1	3	303	10700	9600			
36L218	D53	1160	1	3	393	13900	12600			
36L228	D53	1160	2	3	435	17550	16240	14600	12570	
36L426	D53	1160	3	3	465	20230	19400	18400	17300	16050
42L228	D53	1160	5	3	570	27850	26400	24700	22650	20200
48L226	D53	870	3	3	640	30300	27800	24750	21500	

Includes TEFC motor 115/230/1/60 or 230/460/3/60.

Model B53 Roof Ventilators – Belted



CATALOG NUMBER				PHASE	APPROX. SHIP WT. (LBS.)	CFM AT STATIC PRESSURE				
PROP	FAN TYPE	RPM	HP			FREE AIR	1/8"	1/4"	3/8"	1/2"
36L422	B53	1085	2	3	443	16900	15940	14850	13670	12360
42L422	B53	960	3	3	600	23650	22490	21040	19510	17840
48L422	B53	769	3	3	700	28500	26580	24480	22170	

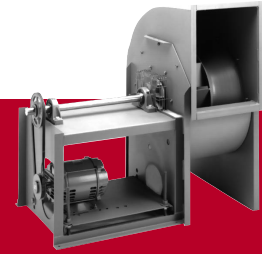
Includes an adjustable V-belt drive and TEFC motor 230/460/3/60.

Model BD40C Roof Ventilators – Belt Driven



CATALOG NUMBER				PHASE	APPROX. SHIP WT. (LBS.)	CFM AT STATIC PRESSURE				
PROP	FAN TYPE	RPM	HP			FREE AIR	1/8"	1/4"	3/8"	1/2"
24L422	BD40C	1618	1	3	394	6550	6150	5700		
30L422	BD40C	1405	2	3	554	11100	10550	9900	9300	8620
36L422	BD40C	1214	3	3	695	17700	16800	15800	14700	13650
42L422	BD40C	1114	5	3	904	25750	24700	23400	22100	20650
48L422	BD40C	891	5	3	1116	30800	29100	27350	25350	23200

Includes an adjustable V-belt drive and TEFC motor 230/460/3/60.



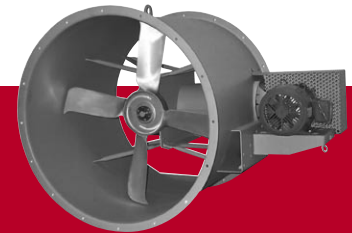
Utility Blowers – Type BIUB

SIZE	WHEEL DIAMETER (IN.)	CFM RANGE	MAXIMUM SAFE FAN RPM	MAXIMUM SP	FAN ONLY APPROX. SHIP WT. (LBS.)
12-BIUB	12.25	690 — 3270	4119	8"	133
15-BIUB	15.00	1030 — 4900	3364	8"	178
18-BIUB	18.25	1540 — 7300	2729	8"	242
22-BIUB	22.25	2280 — 10830	2238	8"	383
27-BIUB	27.00	3350 — 15920	1803	8"	559

All units furnished as Arr. #10, Class II construction, clockwise or counterclockwise rotation, top horizontal discharge with outlet flange. All fans have rotatable housings.

OPTIONAL ACCESSORIES: Motor, Drive, Motor Mounting, and Weather Cover.

Refer to Bulletin 760 for fan performance rating tables.



Tubeaxial Fans – Belt Driven

CATALOG NUMBER				PHASE	APPROX. SHIP WT. (LBS.)	CFM AT STATIC PRESSURE				
PROP	FAN TYPE	RPM	HP			FREE AIR	1/8"	1/4"	3/8"	1/2"
12M624	TABD	3900	1	3	99	2434	2376	2316	2255	2193
14L428	TABD	3175	3/4	3	103	2724	2608	2484	2353	2209
16L428	TABD	2550	3/4	3	108	3267	3100	2920	2726	2500
18L428	TABD	2753	1½	3	134	5478	5298	5105	4895	4665
24L422	TABD	1997	2	3	201	8907	8587	8257	7917	7571
30L422	TABD	1576	3	3	298	13729	13222	12699	12160	11609
36L422	TABD	1213	3	3	366	18990	18208	17358	16415	15348
36L422	TABD	1439	5	3	376	22528	21876	21186	20451	19659
42L422	TABD	1113	5	3	457	27628	26639	25577	24422	23140
48L422	TABD	891	5	3	582	32978	31557	30006	28274	26301

Includes an adjustable V-belt drive, TEFC motor 230/460/3/60 and belt guard.

OPTIONAL ACCESSORIES: Stack Cap, Curb Base (Sizes 24" through 48").



Tubeaxial Fans – Type “T” Belt Driven

CATALOG NUMBER				PHASE	APPROX. SHIP WT. (LBS.)	CFM AT STATIC PRESSURE						
PROP	FAN TYPE	RPM	HP			FREE AIR	1/4"	1/2"	3/4"	1"	1¼"	1½"
12T734	TTABD	2778	3/4	3	137	2150	1979	1782				
15T734	TTABD	2413	1½	3	174	3650	3402	3132	2788			
18T734	TTABD	2490	3	3	247	6690	6480	6193	5882	5539	5187	4787
25T734	TTABD	1507	3	3	397	11350	10770	10099	9290	8356		
25T734	TTABD	1786	5	3	407	13480	12973	12441	11849	11168	10409	9461
29T734	TTABD	1395	5	3	540	16400	15680	14864	13916	12809		

Includes an adjustable V-belt drive, TEFC motor 230/460/3/60 and belt guard.

Industrial Ventilation

Vaneaxial Fans – Type “VT” Belt Driven



CATALOG NUMBER				PHASE	APPROX. SHIP WT. (LBS.)	CFM AT STATIC PRESSURE							
PROP	FAN TYPE	RPM	HP			FREE AIR	1/4"	1/2"	3/4"	1"	1 1/4"	1 1/2"	2"
12T734	VTBD	2778	3/4	3	156	2090	1978	1861	1723	1565			
15T734	VTBD	2413	1 1/2	3	198	3570	3384	3219	3034	2820	2579		
18T734	VTBD	2490	3	3	281	6650	6459	6256	6041	5814	5572	5305	4660
25T734	VTBD	1507	3	3	464	11100	10609	10094	9565	9003	8358	7528	
25T734	VTBD	1786	5	3	474	13130	12744	12317	11878	11432	10972	10471	9300
29T734	VTBD	1395	5	3	639	16100	15425	14786	14126	13450	12707	11866	

Includes an adjustable V-belt drive, TEFC motor 230/460/3/60, vane section, belt guard and hardware.

Chemical Process Ventilation

Tubeaxial Fans – FG7 Fiberglass Belt Driven



CATALOG NUMBER				PHASE	APPROX. SHIP WT. (LBS.)	CFM AT STATIC PRESSURE				
PROP	FAN TYPE	RPM	HP			FREE AIR	1/8"	1/4"	3/8"	1/2"
18FG728	FBD	2057	1	3	132	4730	4520	4290	4020	3720
24FG728	FBD	1259	1	3	195	7050	6650	6160	5500	
30FG720	FBD	1647	3	3	285	13620	13200	12800	12270	11800
36FG720	FBD	1433	5	3	355	21000	20400	19750	19100	18420

Includes an adjustable V-belt drive, TEFC motor 230/460/3/60 and motor cover, 316 SS shaft and mild steel motor base coated with epoxy paint.

Tubeaxial Fans – Type “TF” Fiberglass Belt Driven



CATALOG NUMBER				PHASE	APPROX. SHIP WT. (LBS.)	CFM AT STATIC PRESSURE						
PROP	FAN TYPE	RPM	HP			FREE AIR	1/4"	1/2"	3/4"	1"	1 1/4"	1 1/2"
15TF734	TFBD	2413	1 1/2	3	183	3650	3420	3140	2775			
18TF734	TFBD	2490	3	3	257	6690	6420	6130	5820	5490	5110	4630
25TF734	TFBD	1507	3	3	292	11830	10750	10060	9300	8300		
29TF734	TFBD	1395	5	3	480	16400	15750	15000	13500	12800	11200	

Includes an adjustable V-belt drive, TEFC motor 230/460/3/60 and motor cover, 316 SS shaft and mild steel motor base coated with epoxy paint.

Chemical Process Ventilation

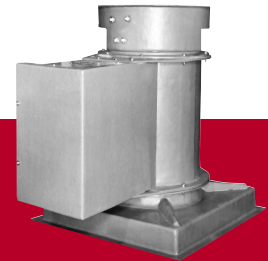
Vaneaxial Fans – Type “VTF” Fiberglass Belt Driven



CATALOG NUMBER				PHASE	APPROX. SHIP WT. (LBS.)	CFM AT STATIC PRESSURE							
PROP	FAN TYPE	RPM	HP			FREE AIR	1/4"	1/2"	3/4"	1"	1¼"	1½"	2"
15TF734	VTFBD	2413	1½	3	197	3570	3430	3260	3080	2860	2570		
18TF734	VTFBD	2490	3	3	291	6650	6435	6270	6050	5820	5590	5320	4660
25TF734	VTFBD	1507	3	3	367	11120	10630	10120	9570	9000	8320	7500	
29TF734	VTFBD	1395	5	3	610	16100	15500	14800	14200	13450	12750	11900	

Includes an adjustable V-belt drive, TEFC motor 230/460/3/60, motor cover and hardware, vane section, 316 SS shaft and mild steel motor base coated with epoxy paint.

Roof Ventilators – FG7 Fiberglass Belt Driven



CATALOG NUMBER				PHASE	APPROX. SHIP WT. (LBS.)	CFM AT STATIC PRESSURE				
PROP	FAN TYPE	RPM	HP			FREE AIR	1/8"	1/4"	3/8"	1/2"
18FG728	FRV	2057	1	3	291	4625	4420	4210	3940	3640
24FG728	FRV	1259	1	3	363	6970	6490	5970	5250	—
30FG720	FRV	1647	3	3	542	13600	12960	12520	12060	11620
36FG720	FRV	1433	5	3	646	20640	20000	19320	18760	18160

Includes an adjustable V-belt drive, TEFC motor 230/460/3/60, motor cover, 316 SS shaft and mild steel motor base coated with epoxy paint.

Electrical Accessories



Disconnect Switches

Nonfused, NEMA 3R Enclosure. Outdoor Rainproof, Sleet Resistant.

AMP	MAX. HP	VOLTAGE	DESCRIPTION
30	10	240	NEMA 3R Heavy-Duty Safety Disconnect Switches
30	20	480	

Quality Air Handling Equipment

AXIAL FLOW



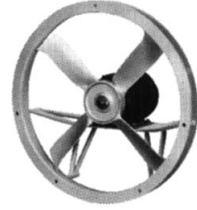
Tubeaxial



Panel Fan



Mancooler



Ring Fan



Tubeaxial Adjustable Pitch

VANEAXIAL



Type VT



Type W Adjustable Pitch



Type VTF Fiberglass

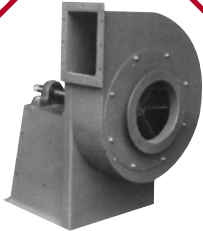


Type B Higher Pressure



Axico Anti-Stall

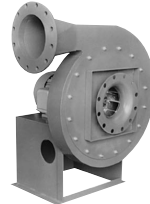
CENTRIFUGAL



Industrial Exhaust



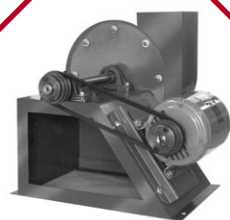
CB / CBA



Series 14 High Pressure



Centaxial



Pressure Blower

ROOF VENTILATOR



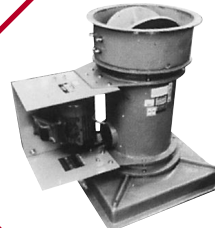
Upblast Propeller



Upblast Axial



Tu-WAY™



Fiberglass

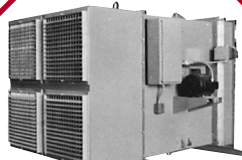


PRV Centrifugal

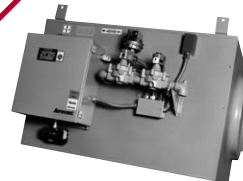
AIR HEATER



Gas-Fired Air Make-Up



Steam Air Make-Up



WARRANTY

Aerovent equipment is guaranteed to deliver its rated output, if properly installed and operated under normal conditions. Aerovent will correct by repair, replacement, or issuance of credit at our option, F.O.B. our plant, defects in material or workmanship which may develop under normal and proper use within eighteen (18) months after date of shipment from our factory, if purchaser gives us notice

within ten (10) days of discovering such defects. The correction of these defects by repair, replacement, or issuance of credit shall constitute fulfillment of all obligation to purchaser. (NOTE: We will not assume expense or liability for repairs made outside our factory without prior written consent.)



Aerovent

A Twin City Fan Company

5959 Trenton Lane · Minneapolis, MN 55442-3237

Phone (763) 551-7500 · Fax (763) 551-7501 · www.aerovent.com

